



Temple House, Birmingham, B2 5BG

- Available immediately
- 1 bathroom
- Private balcony
- Close to New Street station
- 2 bedrooms
- Fully furnished
- City centre location
- Managed by FleetMilne Property

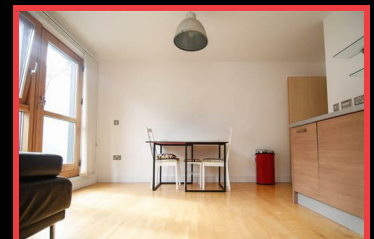
RENT ME
£985 PCM
(+ admin fees)

FleetMilne Property are pleased to offer this fully furnished 2 bedroom, 2 bathroom apartment in Temple House. The apartment briefly comprises an integrated kitchen with fridge/freezer, dishwasher and washer/dryer, spacious lounge, large bathroom and plenty of storage. This property also benefits from a large private balcony.

Located on Temple Street, just off New Street, this property really is right in the heart of the city. With New Street station being just a minute away and the Bullring shopping centre and The Mailbox just a few minutes further, Temple House proves an ideal place of residence for both professionals and students.

Viewings can usually be arranged with 24 hours notice. Tenancies at this property will be fully managed by a private landlord and administration fees will apply.

EPC RATING C.



Speak to the lettings team

T: 0121 366 0456

E: property@fleetmilne.co.uk

FLEETMILNE
PROPERTY